

## MokiTV

### Installation Instructions

Thank you for choosing MokiTV! Get ready to elevate your entertainment setup to a whole new level. Before you dive into the assembly and installation process, be sure to carefully review all included instructions and manuals. This will ensure a smooth and hassle-free setup experience.

If you feel unsure or encounter any issues during assembly, do not hesitate to contact a qualified installer. **Your safety is our top priority, and Graphic House, Inc., cannot be held responsible for any injuries or damages that may occur during installation.**

**Please note: DO NOT** add any accessories or extra components to the MokiTV system. Adding extra weight could surpass the mounting system's capacity, potentially damaging your MokiTV or even resulting in injury. Keep it safe, keep it simple and enjoy the magic of MokiTV!

## PARTS LIST



- A. MokiTV
- B. Ceiling Plate & Ceiling Mast
- C. Lower Adjustable Mast Section
- D. Mast Bolt & Nylon Locking Nut
- E. Allen Key
- F. MokiTV Mount Manufacturer Installation Instructions
- G. TV Remote and Manual

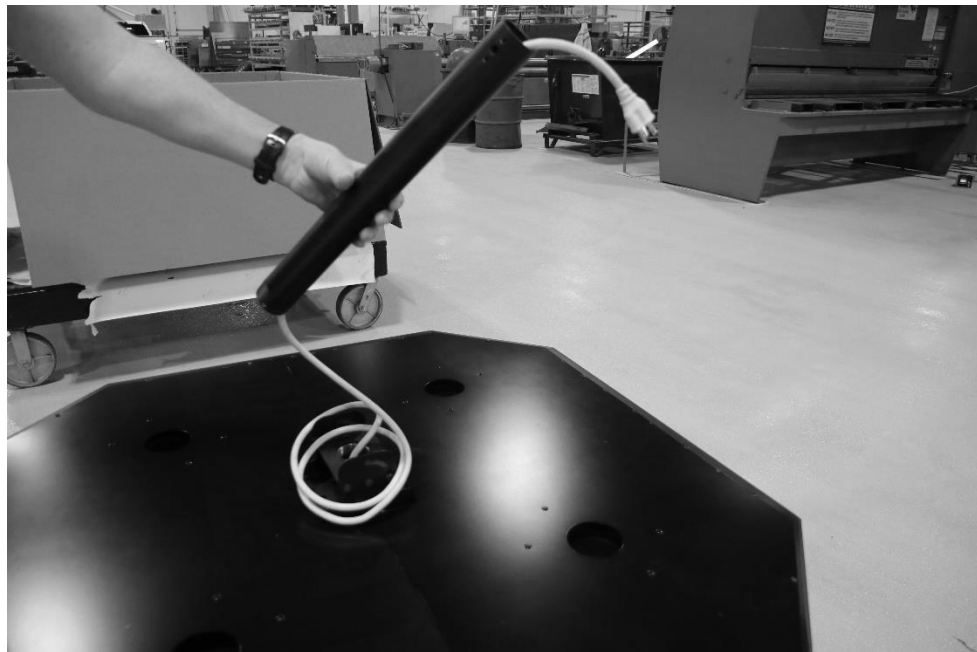
*You will need to provide a 1/2" open-end wrench and socket for assembling the adjustment bolt in the ceiling mount component.*

## **ASSEMBLY AND INSTALLATION INSTRUCTIONS**

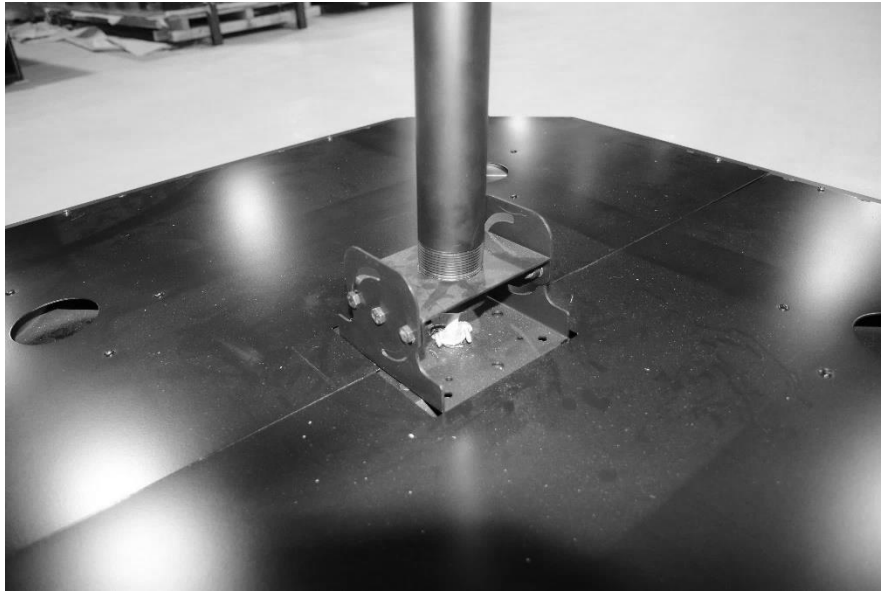
1. Open the packaging and remove MokiTV (**Part A**) and all other parts.



2. Run the power cord through the Lower Adjustable Mast section (**Part C**).



3. Thread the Lower Adjustable Mast section into the base plate and tighten the set screw using the provided Allen Key (**Part E**).



4. Following the supplied MokiTV Mount Manufacturer Installation Instructions included with your MokiTV (**Part F**), install the Ceiling Plate and Mast (**Part B**). Note: Ceiling Plate and Mast should be mounted to blocking, joist, rafter or truss that can hold a minimum of 300 lbs. **DO NOT** mount the MokiTV directly into drywall.



5. Take the power cord from the bottom of the Ceiling Mast (**Part B**) and attach it to the power cord from the Lower Adjustable Mast Section (**Part C**).



6. With the help of 2 – 3 people, carefully lift the MokiTV and attach it to the Ceiling Mast.

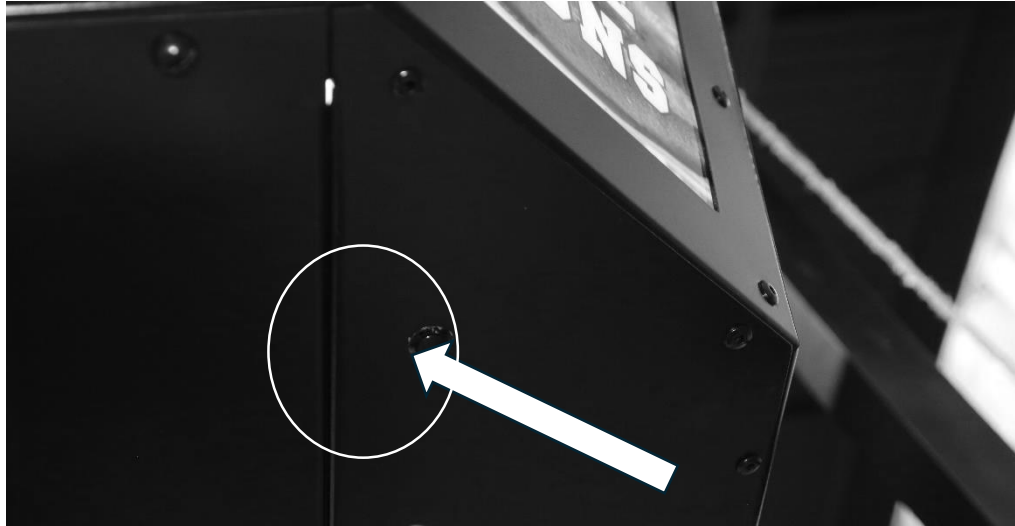


7. Insert the Ceiling Mast section (**Part B**) into the Lower Adjustable Mast (**Part C**). Insert Mast Bolt (**Part D**) at the desired height and apply and tighten Nylon Lock Nut (**Part D**) using the supplied Allen Key (**Part E**) to complete mast assembly.



8. Plug MokiTV into the outlet. **(Note: The ceiling outlet is not provided).** Turn on lights using the On/Off Switch located on the bottom of the unit. Follow instructions in the supplied TV Manual for TV setup **(Part G)**.





Thank you for choosing MokiTV! We hope you enjoy your Moki experience—bringing your space to life with dynamic, high-quality visuals.

If you have any questions, we're here to help!

[www.mokitv.com](http://www.mokitv.com)